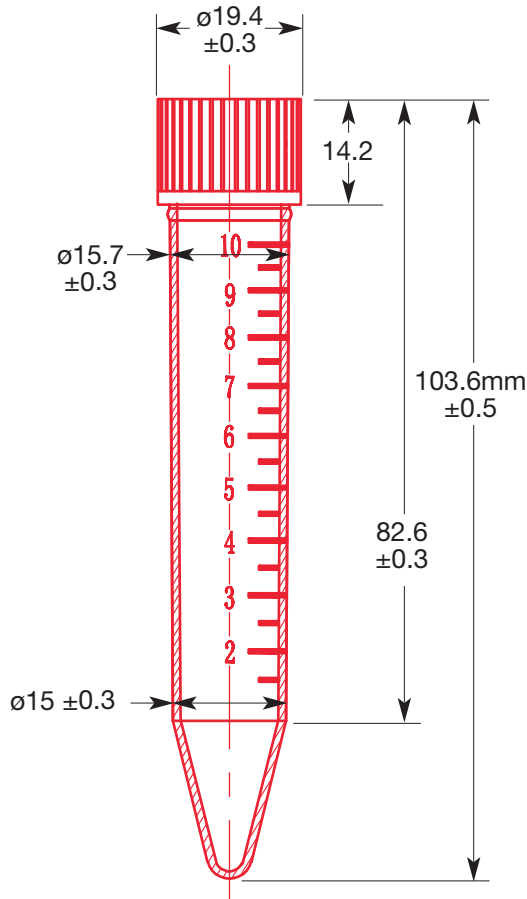
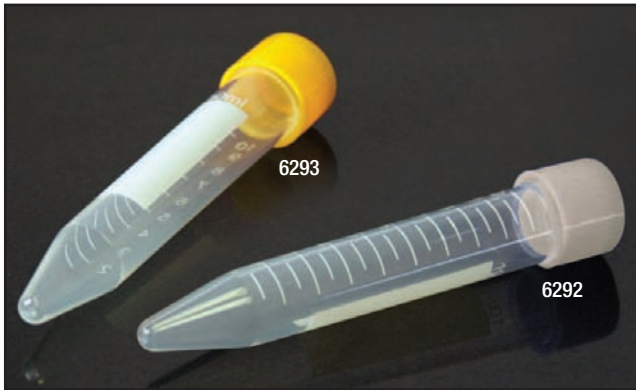


## 16 x 100mm (10mL Capacity) Screw Cap Centrifuge Tubes

Item# 6292 / 6293



### Description

These Globe Scientific 10mL centrifuge tubes have leak-resistant screw caps and are available in sterile and non-sterile versions. The tubes can be used on the bioMerieux® PREVI™\* Isola automated plate streaker system and also in centrifuge rotors that accommodate 15mL centrifuge tubes. The tubes have white printed graduation marks and a large white writing area.

### Features

- 16 x 100mm
- 10mL capacity
- Leak-tight screw caps
- Polypropylene (PP)
- Printed graduations
- Large white writing area
- Available sterile and non-sterile

### Technical Specifications

- Spin Rate: 3000 RCF
- Autoclavable: Yes
- Brittleness temperature: 0°C
- Maximum temperature: 135°C
- Sterility: Non-sterile (6292)  
Sterile (6293)

### Products

Item#	Description	Unit
6292	10mL centrifuge tube, PP, non-sterile, with separate natural screw cap, 500/bag, 2 bags/case	1000
6293	10mL centrifuge tube, PP, STERILE, with attached yellow screw cap, 100/bag, 10 bags/case	1000

*\*All instruments and names of manufacturers mentioned herein are the trademarks of their respective companies and are used for reference purposes only. Globe Scientific Inc. expressly disclaims any affiliation to them.*