

Ohm Metrics CM2800-SEE

Hardware Management Program for the CM2800 Dual Wire Resistance Monitor

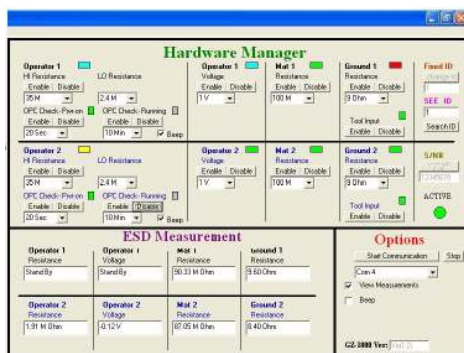
The CM2800-SEE is a dedicated program designed for the hardware management of the CM2800 networkable dual wire ESD monitor. It is an independent PC-based control program that communicates to the monitor through an RS-232 port and an RS-232/RS-485 converter to exchange commands and data at high speeds. For any CM2800 model, all its supported monitor functions can be re-configured dynamically through this easy to use CM2800-SEE program. A simple and clear on-screen menu will guide you through the CM2800-SEE functions:



CM2800-SEE Hardware Management Program

- Enable/Disable the measure of operator resistance and voltage
- Set the limit of operator resistance and voltage
- Enable/Disable ESD mat resistance
- Set the limit of ESD mat resistance
- Enable/Disable Tool/Equipment resistance
- Set the limit of Tool/Equipment resistance
- View the measured data in real-time
- Set the monitor ID and Description

The Ohm Metrics' CM2800 Series dual conductor workstation monitors provide continuous, uninterrupted monitoring of most grounding parameters on a workbench or in a tool, in compliance with ANSI 6.1 and ANSI/ESDA S.20.20 requirements.



CM2800-SEE on Screen Dialog Window

Product Number

CM2800-SEE Hardware Management Program
CM-485SEE Converter Cable

This document is prepared for our customers as a service, and is to the best of our knowledge true and accurate. However, it is understood and agreed by the users of this document that we will accept no liability for the conclusions reached. Users of this document may therefore wish to perform additional testing before determining that products mentioned are suitable.



Transforming Technologies, LLC

3719 King Road.
Toledo, OH 43617

Phone: 1.419.841.9552

Fax: 1.419.841.3241

www.transforming-technologies.com

Outstanding Alternatives in Static Control